

# COLUMBUS<sup>®</sup>

## CRAFT MEATS

**NOW IN FOODSERVICE**

This is the taste of craft. Fine salami and Italian specialties,  
made true to traditional methods.







**HOT SOPRESSATA**  
**83583**

Coarsely chopped and mixed with flavorings of chile de arbol, fennel and sherry wine.



**SOPRESSATA**  
**83520**

Robust with sweet fennel, red peppers and red wine, our Sopressata is every bit as authentic as the varieties that were made centuries ago.



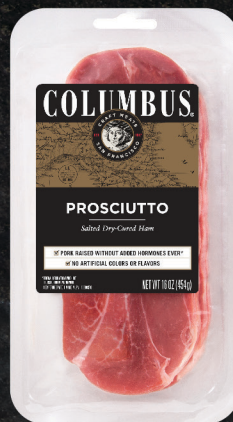
**SALAME SECCHI - 2 PACK**  
**83836**

Made with crushed white and black peppercorns and burgundy wine. Hand-tied and slow-aged in a natural casing that gives it a subtle, smooth flavor.



**CHARCUTERIE SAMPLER 4 CT.**  
**83886**

Four of Columbus's top salame items in one easy to use package. A perfect variety to make a charcuterie plate that will keep guests entertained during any occasion. Pairing suggestions on back of the package for easy entertaining.



**PROSCIUTTO - 1 LB.**  
**83927**

Made from the premium center cut of leg meat that is gently massaged with a hint of salt and then placed in aging rooms for the slow drying process.



**CHARCUTERIE TRIO**  
**83872**

The sampler contains four ounces each of pre-sliced Italian Dry Salame, Pepper Salame and Calabrese Salame - three of the most popular varieties used for entertaining.

**COLUMBUS**  
CRAFT MEATS

**PASSIONATELY CRAFTED**

For Samples & Support: